

MiView USB Digital Microscope

MV1302U

User's Manual

Welcome

Thank you for choosing MiView USB digital microscope!

The MiView USB digital microscope is an exciting new device that let's you view clear many micro-objects with it, and has a wide scope of applications, such as,

- Industrial Inspection
- Computer Parts inspection
- Telecom module inspection
- Scientific teaching tool
- Medical analysis
- School Research tool
- Insect dissection / examination
- Plant dissection / examination
- Skin examination
- Textile Inspection
- Collections / Coin/ Jewelry Inspection
- Printing Inspection
- And more.....

Please read this manual carefully before using MiView USB digital microscope!!!

Contents

Welcome	1
Contents	2
Product Specifications	3
Safety Cautions	3
Package Contents.....	4
System Requirements	4
Software Installation process	5
Window XP OS Installation.....	5
Window Vista OS Installation.....	10
MiView USB digital microscope Connecting	13
Operating MiView USB digital microscope Process.....	15
MiViewCap Application software	16
Tool Bar Description.....	17
Thumbnails remark	18
Take Photo	18
Take Video.....	19
Take time lapsed Photos.....	19
Email	20
Save as.....	21
Menu Bar Function Description	21
File.....	21
Setting.....	21
Capture	23
Help	23
Rate.....	24
Full Screen Display and return	24
Photo Viewing, Measure and Calibration	24
Video player.....	29
Troubleshooting.....	29
Common Fix	29
Q&A	30

Product Specifications

- ◆ Operation system: Windows XP SP2/Vista
- ◆ PC interface: USB 2.0
- ◆ Image Sensor: 1.3 Mega pixels
- ◆ Video Capture Resolution 1280x1024, 640x480, 320x240
- ◆ Color: YUV or 24bit RGB
- ◆ Lens: Dual Axis 27X & 100X Microscope Lens
- ◆ Focus Range Manual Focus From 8mm to 300mm
- ◆ Magnification Ratio 10X to 200X
- ◆ White Balance: Auto.
- ◆ Exposure: Auto
- ◆ Light Source: 8 adjustable LED White Light
- ◆ Power supply: 5V DV from USB Port
- ◆ Size: 120mm (L) X36mm (R)
- ◆ Transmission distance: ≥5m
- ◆ Li-ON Battery: Full charge time is about 3 hours, continuous working time is about 5 hours.
- ◆ Transmission Power consumption: 10mW
- ◆ 4 channel option

Safety Cautions

1. Avoid touching the lens with finger to dirty it and protect the product from electrostatic damage.
2. Do not attempt to disassembly any part of this product.
3. Do not attempt to service this product yourself. Opening the covers may expose you to dangerous voltage points or other risks.
4. Storing and operating MiView USB digital microscope at Temp: -20 ~ 45°C, Humidity: 45% ~ 85%, as this will extend Product life and prevent damage to the product.
5. Do not allow this product to have contact with water or other liquids. If water or other liquids enter the product interior, immediately unplug the product from PC. Continued use of the product may result in fire or an electrical shock.
6. Do not use any detergent or volatile solution, which will damage the camera case, painted surfaces and lens. Only use a soft cleaning cloth to clean it.
7. Do not place this product near a heat source or expose direct flame, avoid the lens damaged by high temperature or humidity
8. If the lens is dirty, please use a lens brush on soft cloth to wipe clean. Avoid touching it with your fingers. Exercise care to avoid scratching the lens.
9. Need to read MiView USB digital microscope User's Manual before using and storing it.
10. To avoid electric shock, remove all electricity source before moving PC.

Package Contents

The MiView USB digital microscope package includes the following:

1. USB microscope
2. CD ROM (Software) and Quick manual
3. Stand or Holding ring (Plastic)
4. 2pcs Cover



System Requirements

In order to install MiView USB digital microscope, you will need the following minimal systems:

- ①. OS: Windows XP SP2 or Vista
- ②. CPU: Pentium IV 1.0G, Celeron, AMD Athlon
- ③. CD-ROM drive
- ④. Available USB port (if it is USB1.1, please use MiViewCap-Beta.exe application inside CD)
- ⑤. 256MB RAM
- ⑥. 100MB available hard disk space
- ⑦. Graphic card: 16-bit

Recommended PC specification for optimal performance:

- √ OS: Windows XP SP2 or Vista SP1 or above
- √ CPU: Pentium IV 1.6G, Celeron, AMD Athlon or above
- √ CD-ROM drive
- √ Available USB 2.0
- √ 512MB RAM or above

- ✓ 10GB available hard disk space or above
- ✓ Graphic card: 16-bit or above

Software Installation process

The following instructions will guide you to through the process of installing the MiView USB digital microscope:

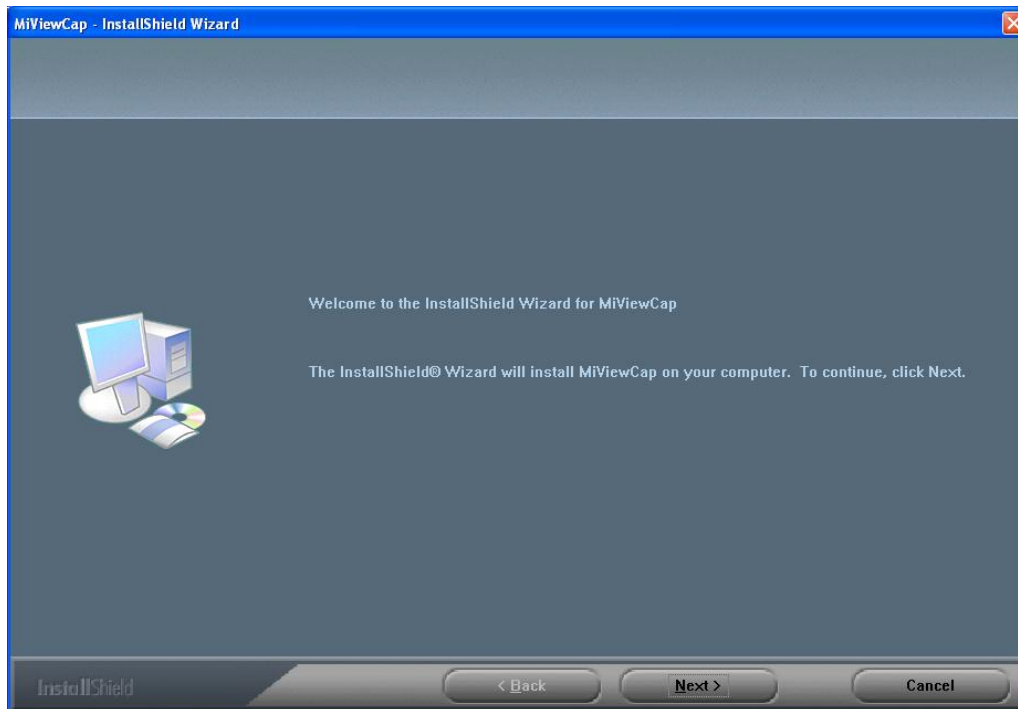
- I. Power on PC and place installation CD into CD-ROM driver, do not connect USB Cable from MiView USB Device to PC before software installation.
- II. Select “Install Software”, and follow the instructions to complete installation.
- III. As driver installation completed, and if system asking for restarting, please restarting PC.

Window XP OS Installation

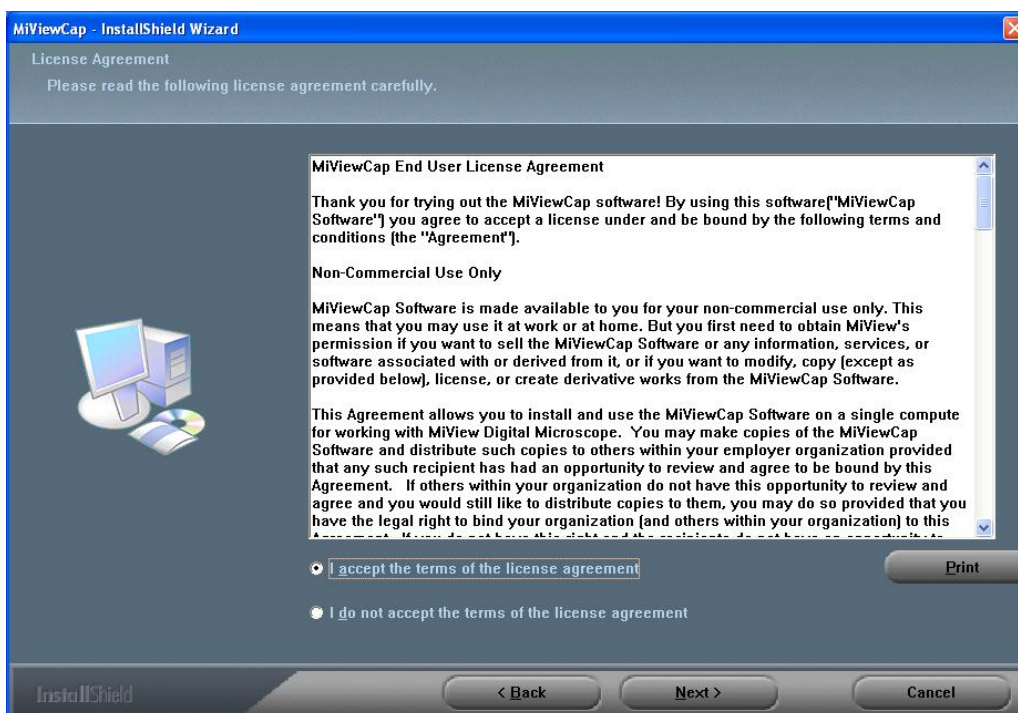
1. Place the installation CD-ROM into CD-ROM drive, the installation program should be started automatically. Otherwise, please execute the AUTORUN.EXE directly from the CD-ROM.



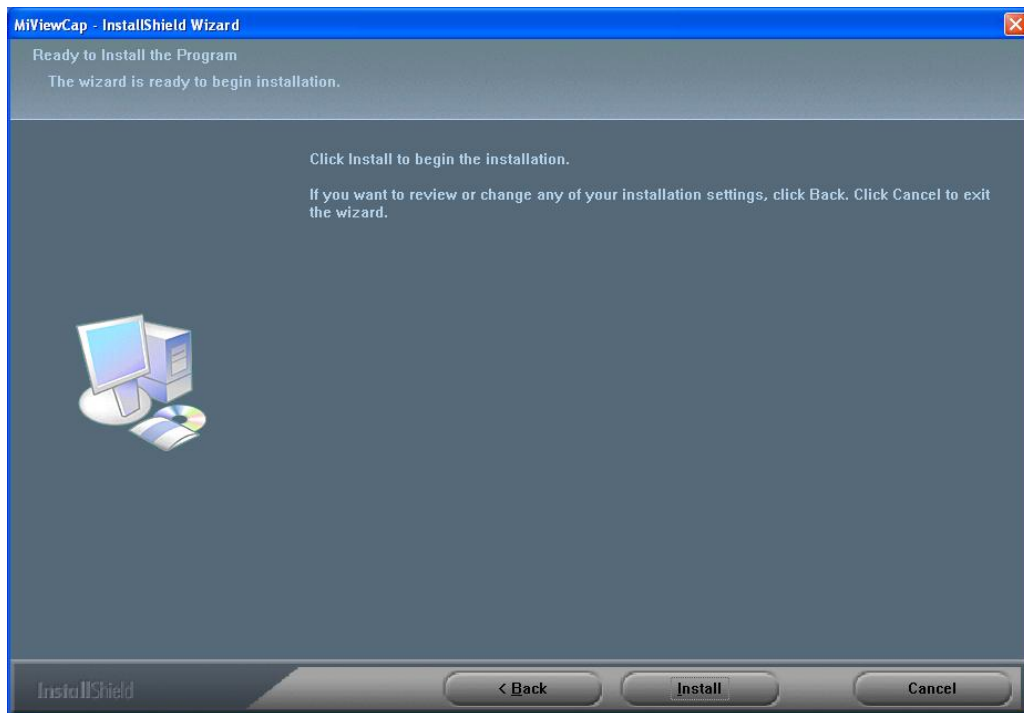
2. Select “SOFTWARE” item, you will see the following popup .Press “Next” to proceed or “Cancel” to abort installation.



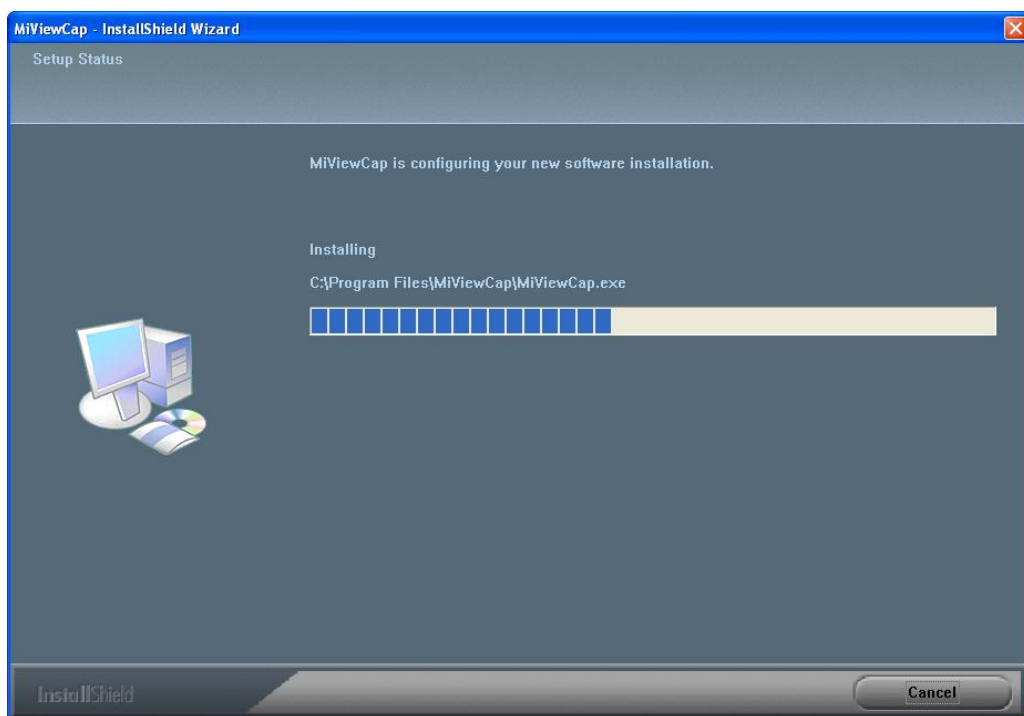
3. You will see the End User License Agreement. If you accept the License Agreement, then you can Click the “Next” button which is availability to process, or “Cancel” to abort installation.



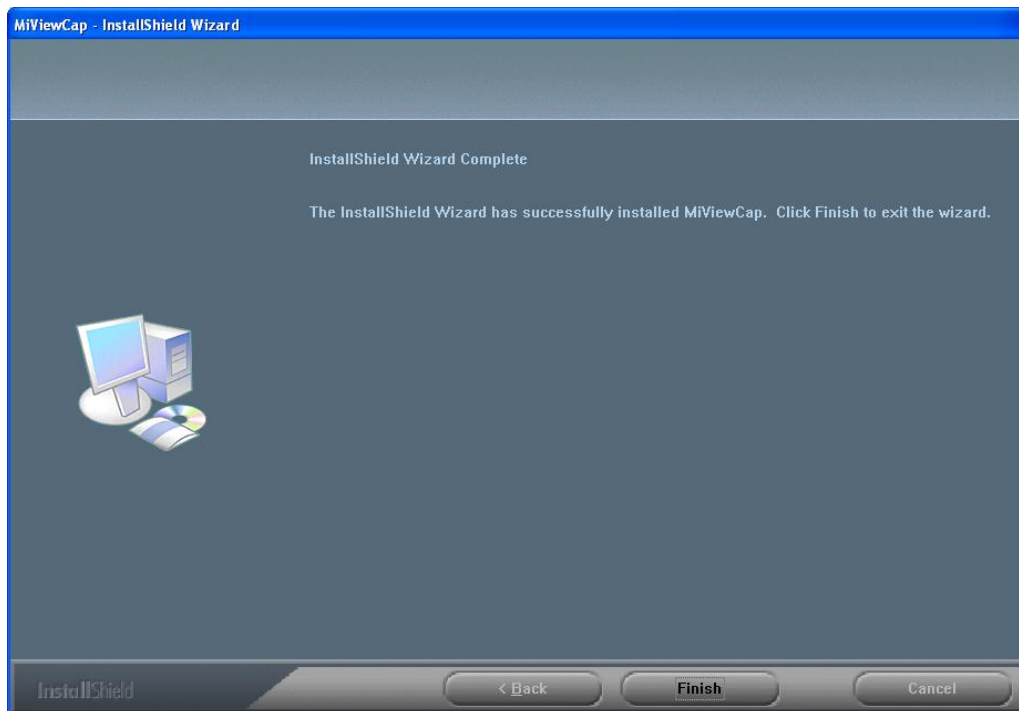
4. Click “Install” to start to install the application, click “Cancel” button to abort installation. Click on “Back” to back to read the End User License Agreement again.



5. You will see the following progress bar below indicating that the installation is proceeding. If click "Cancel" button, it will abort installation.



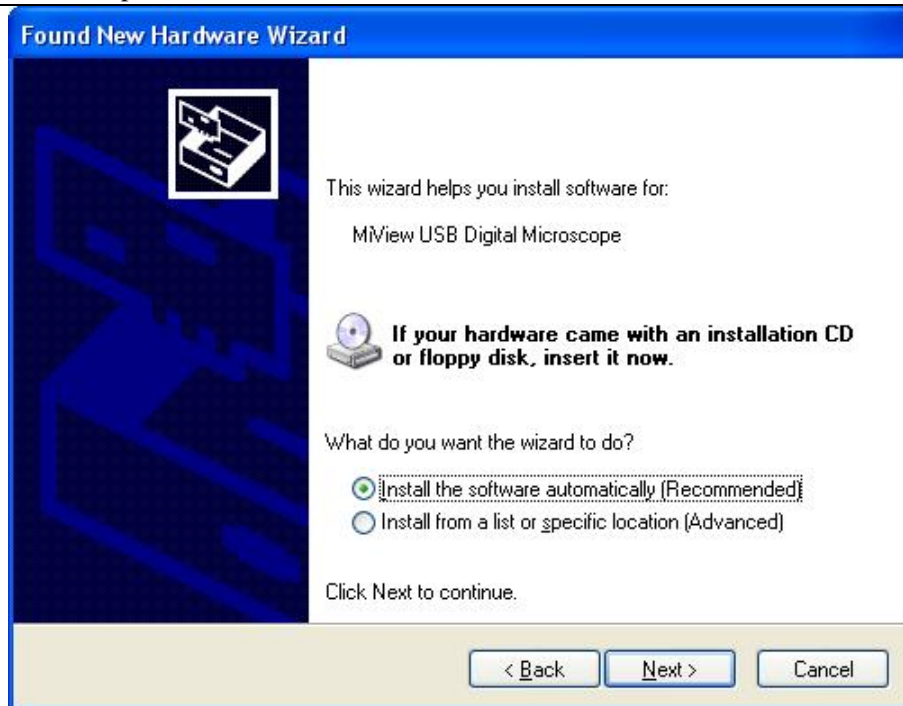
6. Wait until you see the following popup and press "Finish" button.



7. Please plug USB cable to MiView USB digital microscope Device to connect with PC and power on. You will see the following popup window.



8. Please select "No,not this time" and click "Next" to continue.



9. Please select "Install the software automatically (Recommended)" and click "Next" to continue. It would popup the following window.



10. Please click "Continue Anyway" to continue till popup the following window.



11. Click "Finish" to finish all software installation.

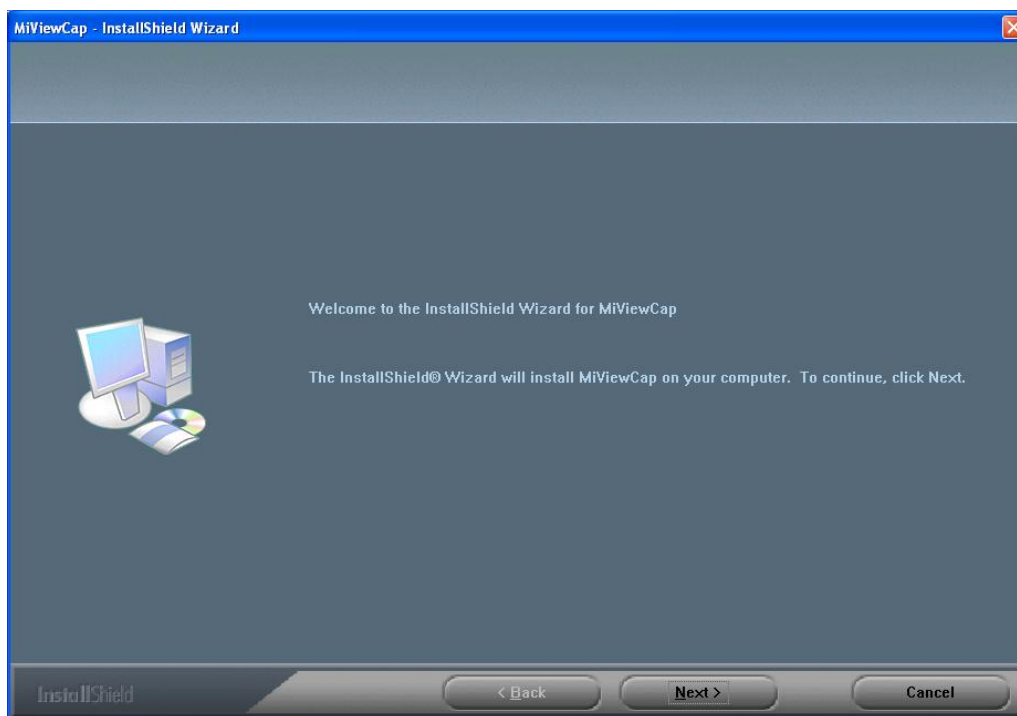
Now the software installation was completed, you can use free MiView USB digital microscope.

Window Vista OS Installation

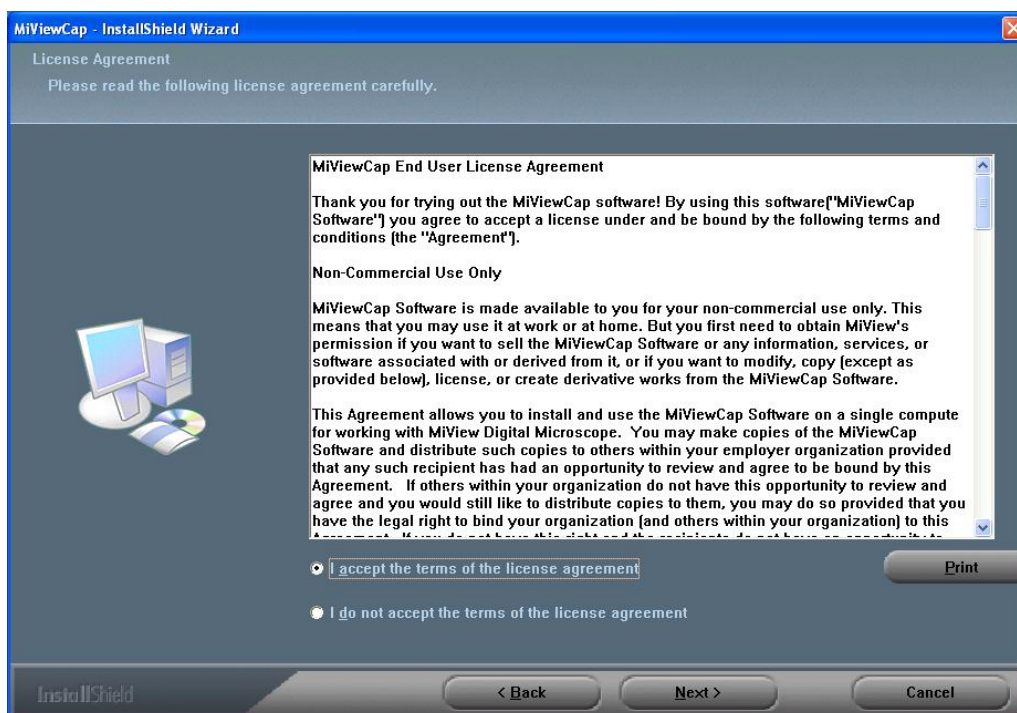
1. Place the installation CD-ROM into CD-ROM drive, the installation program should be started automatically. Otherwise, please execute the AUTORUN.EXE directly from the CD-ROM.



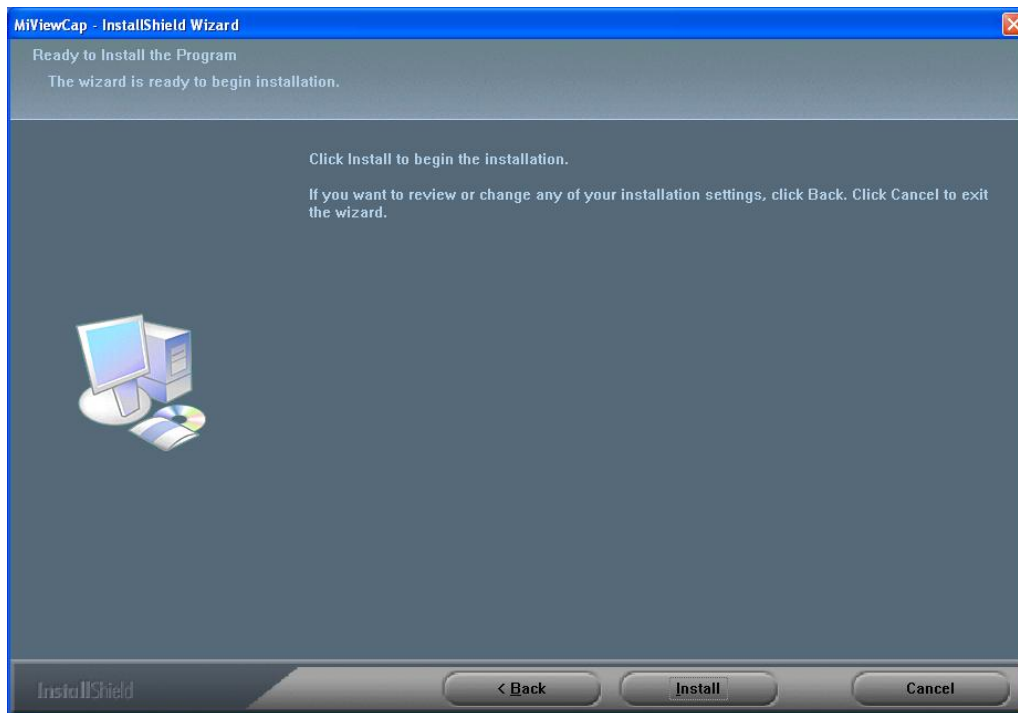
2. Select “SOFTWARE” item, you will see a “User account control” popup. Please press “Allow” to continue or “Cancel” to abort installation.
3. You will see the following popup .Press “Next” to proceed or “Cancel” to abort installation.



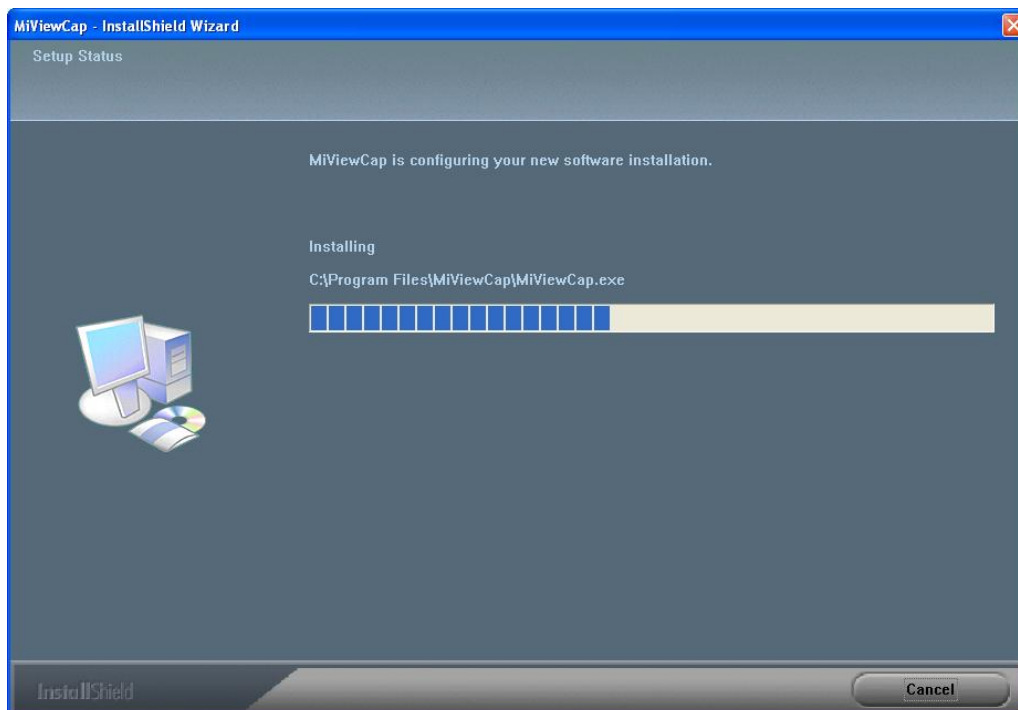
4. You will see the End User License Agreement. If you accept the License agreement, then you can Click the “Next” button which is availability to process, or “Cancel” to abort installation.



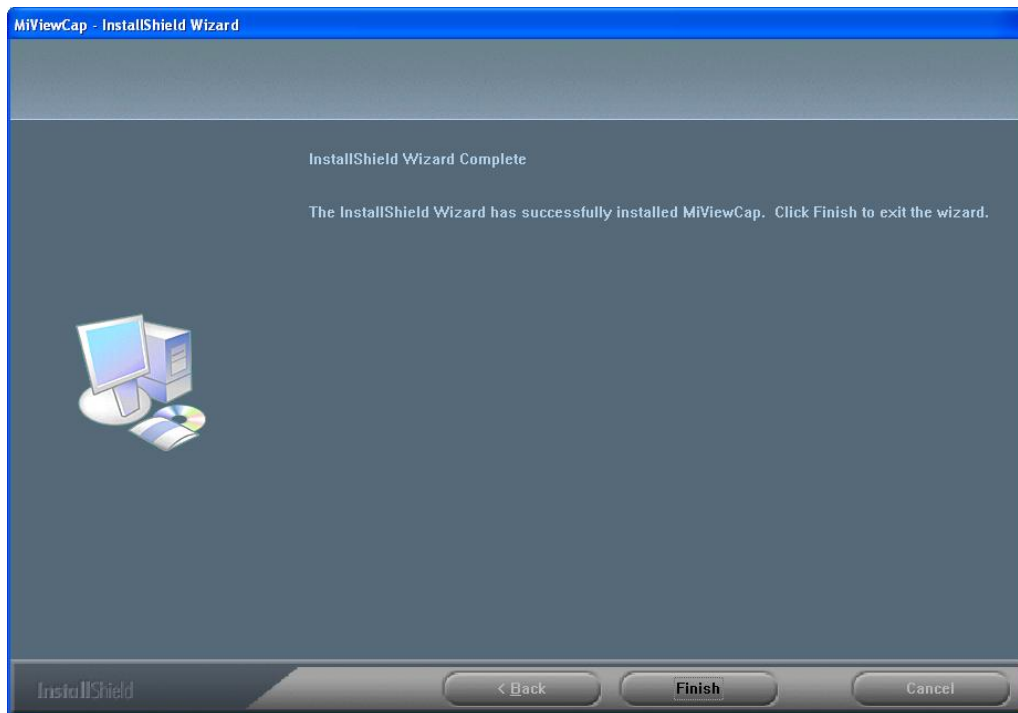
5. Click “Install” to start to install the application, click “Cancel” button to abort installation. Click on “Back” to back to read the End User License Agreement again.



6. You will see the following progress bar below indicating that the installation is proceeding. Click "Cancel" button to abort installation.



7. Wait until you see the following popup and press "Finish" button.



8. Please plug USB cable to MiView USB digital microscope Device to connect with PC and Power on. System will automatically search and install the driver. Wait until you see this message that system show "Your new hardware is installed and ready to use".



Now the software installation was completed, you can use free MiView USB digital microscope.

MiView USB digital microscope Connecting

The following procedure will show you how to properly connect MiView USB digital microscope with your PC.

- i. Connect USB Cable on MiView USB digital microscope to PC USB port and Power on



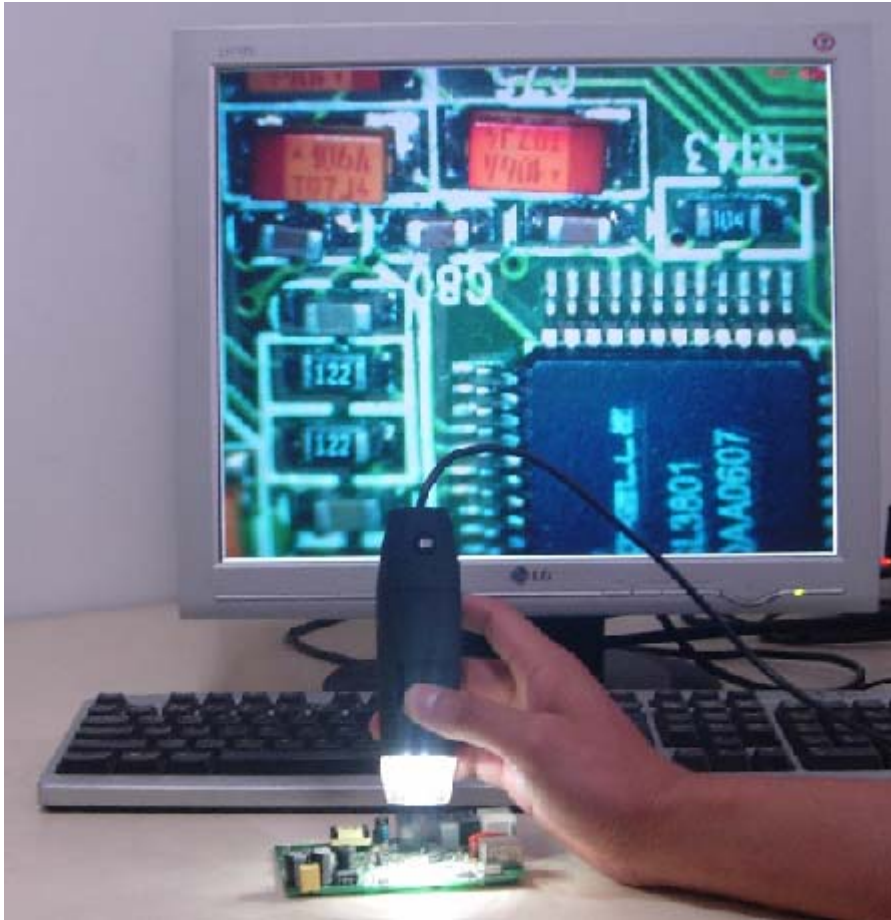
- ii. The MiView USB digital microscope has 1 switch for power on and LED adjusting on one side as shown:



Operating MiView USB digital microscope Process

The following process will show you how to operate MiView USB digital microscope.


- ①. To have a right image, suggested holding MiView USB digital microscope as shown:

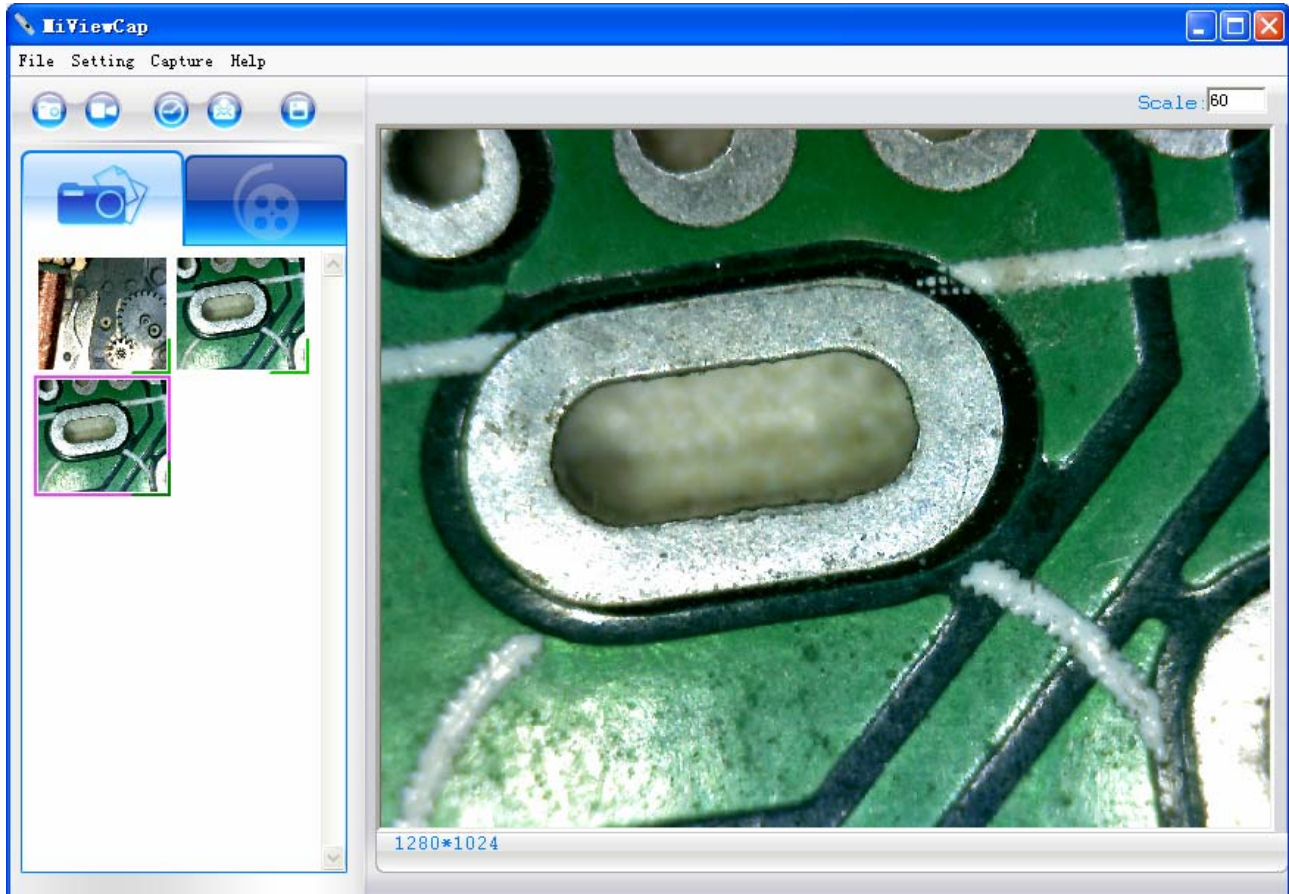


- ②. Put the to-be-observed object near the MiView USB digital microscope, the distance between both (object distances) don't exceed to 30CM.
- ③. Adjust the focus: Use any finger to rotate the roller, till the image is clear.
- ④. The Zoom time will be larger as MiView USB digital microscope is closer to the observed object.
- ⑤. When the observed object is located at the top of the transparent cover, there are two focus positions you can be found by rotating the roller: long cover—60X and 200X; short Cover—80X and 150X. If you want other zoom time, you must adjust the object distance and ever must take off the transparent cover to adjust it.

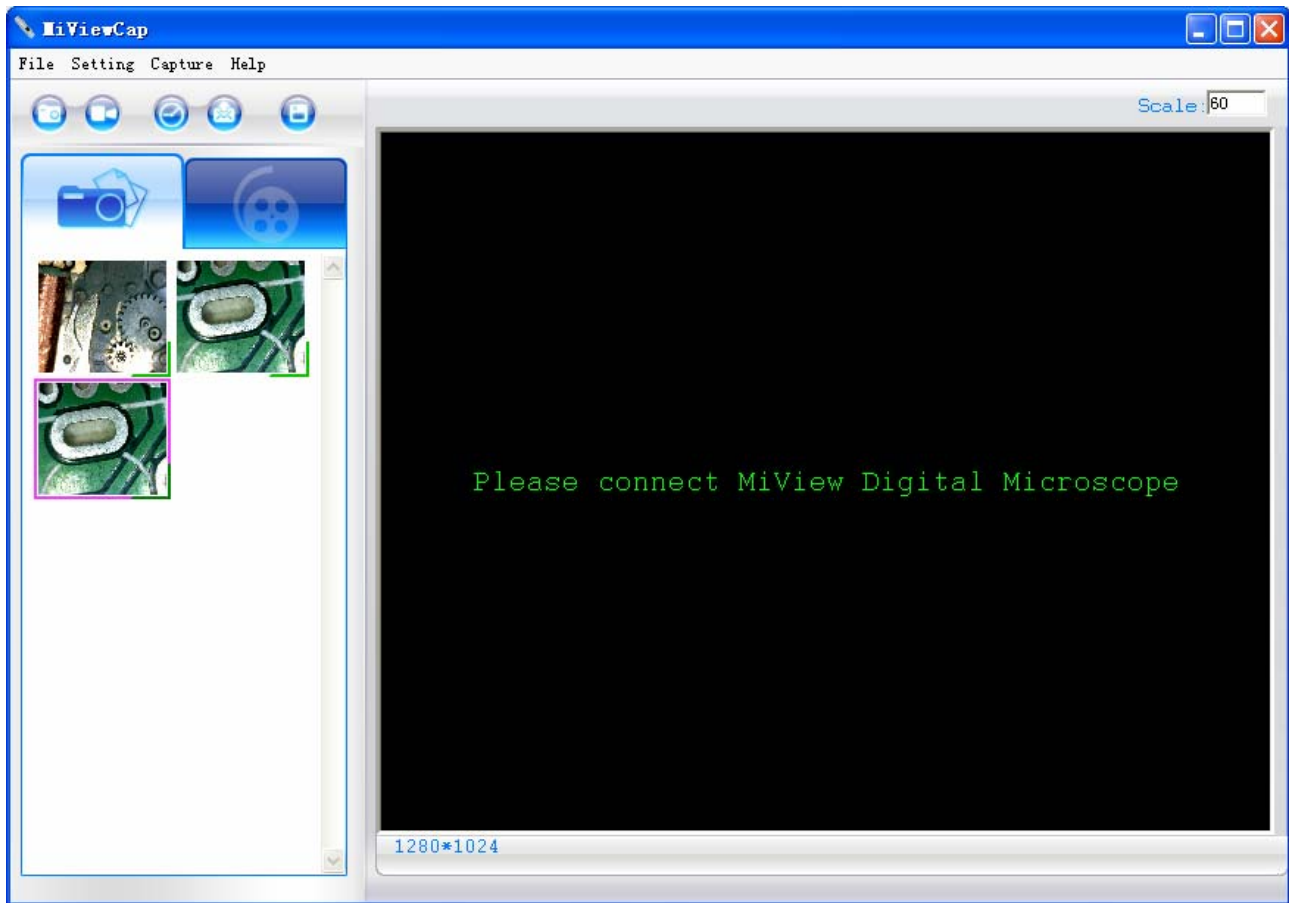
MiViewCap Application software

Note: Before start MiViewCap program, please make sure MiView USB digital microscope has been connected to PC via USB line and Power on.

Double-Click MiViewCap icon on desktop  , the MiViewCap main screen will be shown as below:



If MiView USB digital microscope has not been found while opening the MiViewCap program, the message will be shown as below:



Tool Bar Description



: Take Photo



: Take Video



: Take time lapsed Photos



: Email



: **Save as**--A took-Photo can be saved as "jpg" or "bmp" to your specified disk.



Photo / Video Folder

Photo/Video Folder is on the left side of the program, which contains the thumbnails of Photo or video captured by the program.

The Photos/video in the folder will not be automatically deleted when closing the program. Thus, it is suggested to save manually the needful Photo or video, and then keep this folder clean for file security and program's performance concern.

Thumbnails remark



The Photo or video has been saved





The Photo or video has not yet been saved.

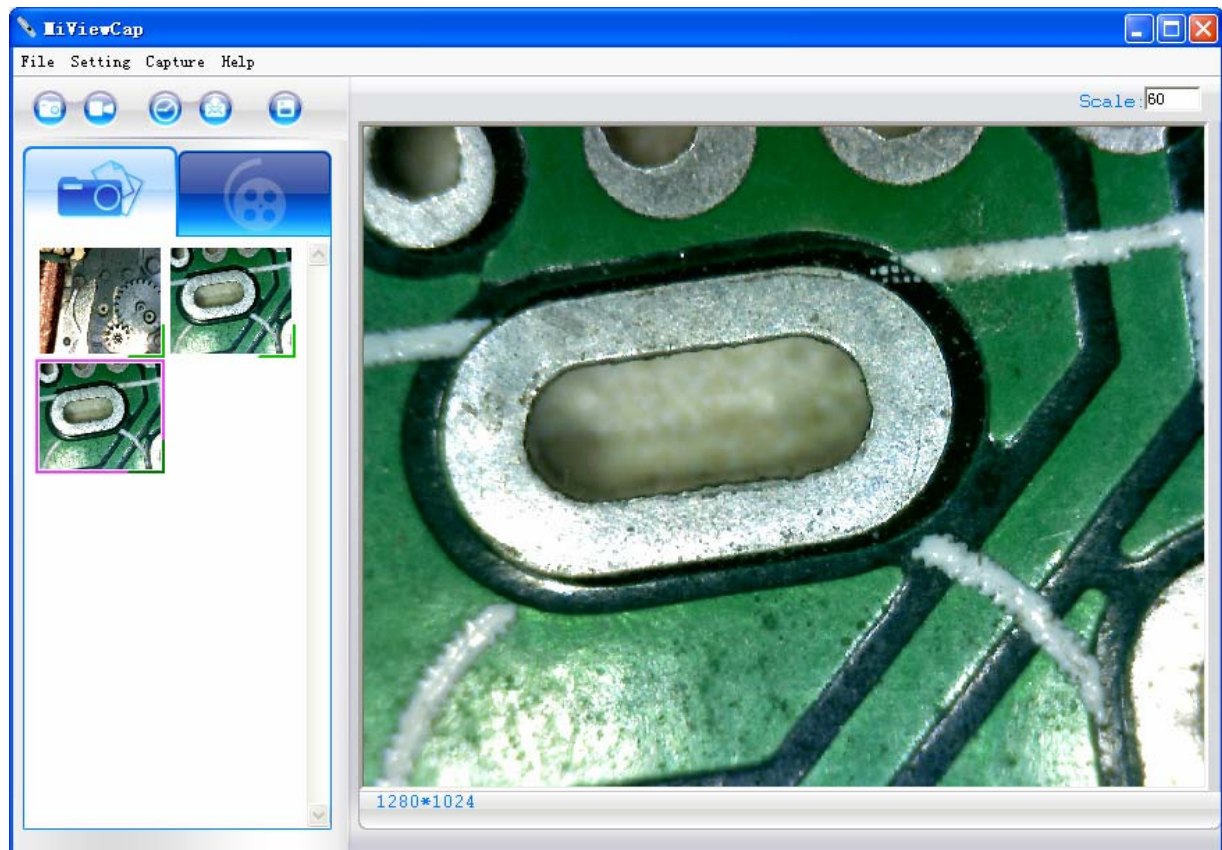


The Photo or video is selected, the mouse stay there, then click the right key of mouse to pop a menu, or click the related buttons of tool bar ,it can be viewed by double-clicking、be saved、be mailed、be opened to edit、be deleted.


Take Photo

You can take Photo by clicking the  icon on Tool bar or press this  button on MiView device (Note: This is Photo folder as below)

Hotkey: F2



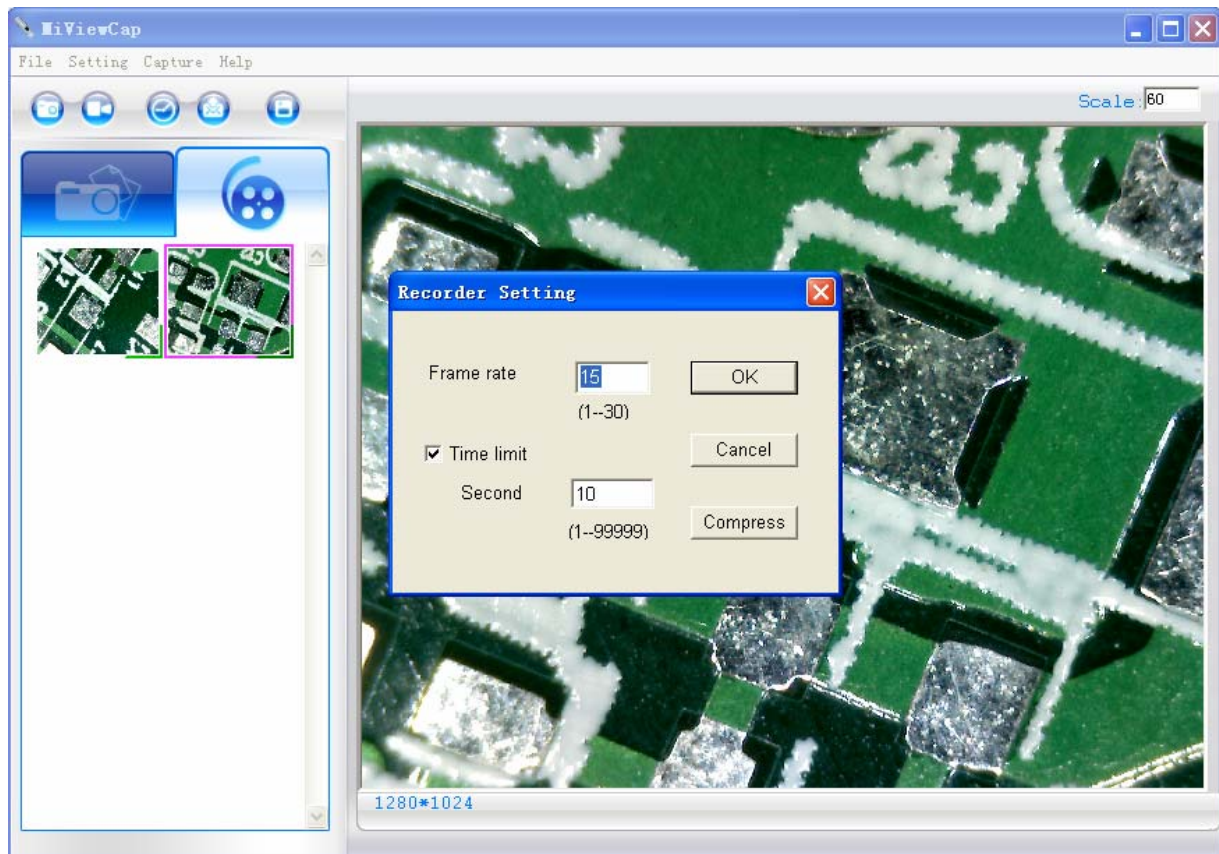
Take Video

The Video can be taken by clicking  icon on Tool bar. (Note: This is Video folder as below).


Recorder setting:

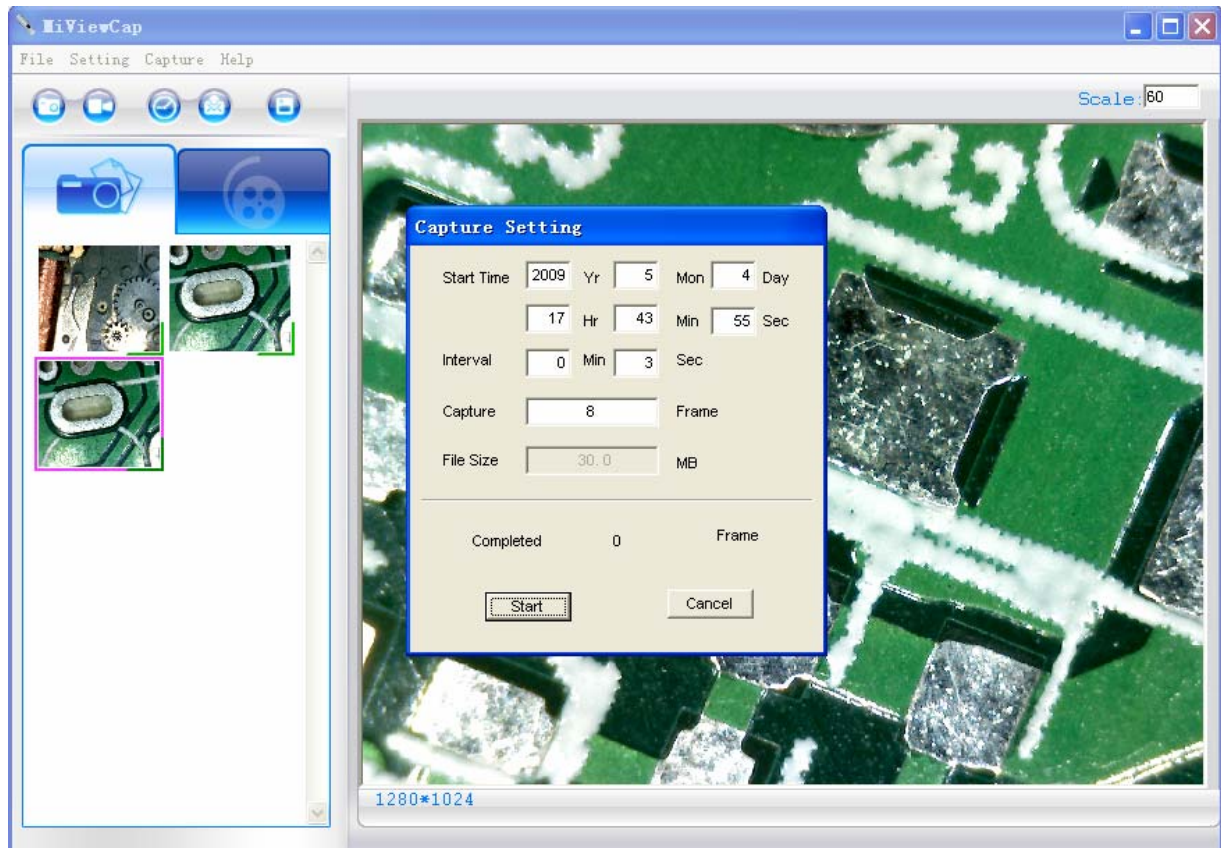
1. **Frame rate**: it is the number of frames or images that are projected or displayed per second. The number range is 1~30
2. **Timer limit**: it is the time of video recording to avoid video file size exceed to the space of disk. The number range is 1~99999
3. **Compress**: click it and you can select the video compressed format to reduce video size. It loads automatically compress programs according to your PC system. The video quality may be varied with different compress program.

Hotkey: F3-Start, F4-Stop




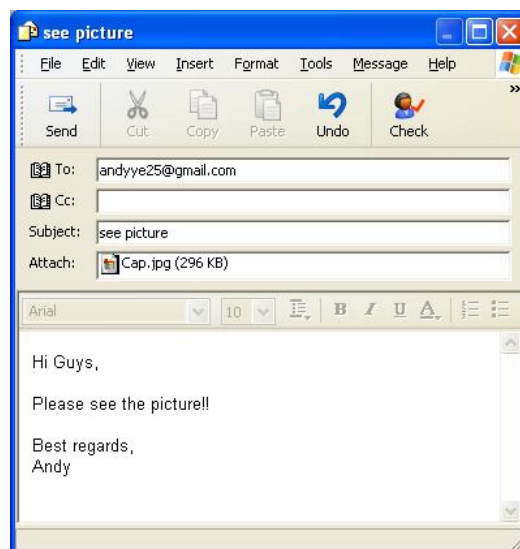
Take time lapsed Photos

You can take time lapsed Photos by click the  icon of Tool Bar as below shown.




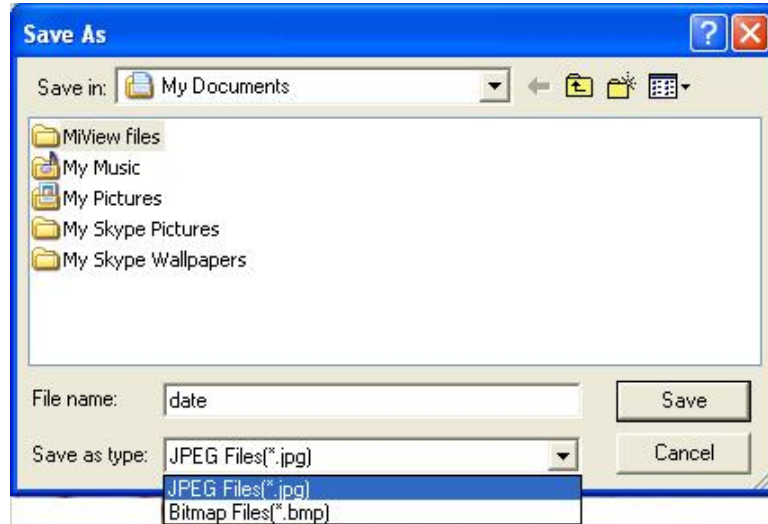
Email

You can send a selected Photo or video as email attachment to other guy by clicking the  Icon of Tool Bar.



Save as

You can select a Photo or video in Photo/Video folder, and then click the  Icon of Tool Bar, the file can be saved as “jpg” or “bmp” Photo or video to your specified disk. As shown below.



Menu Bar Function Description

File

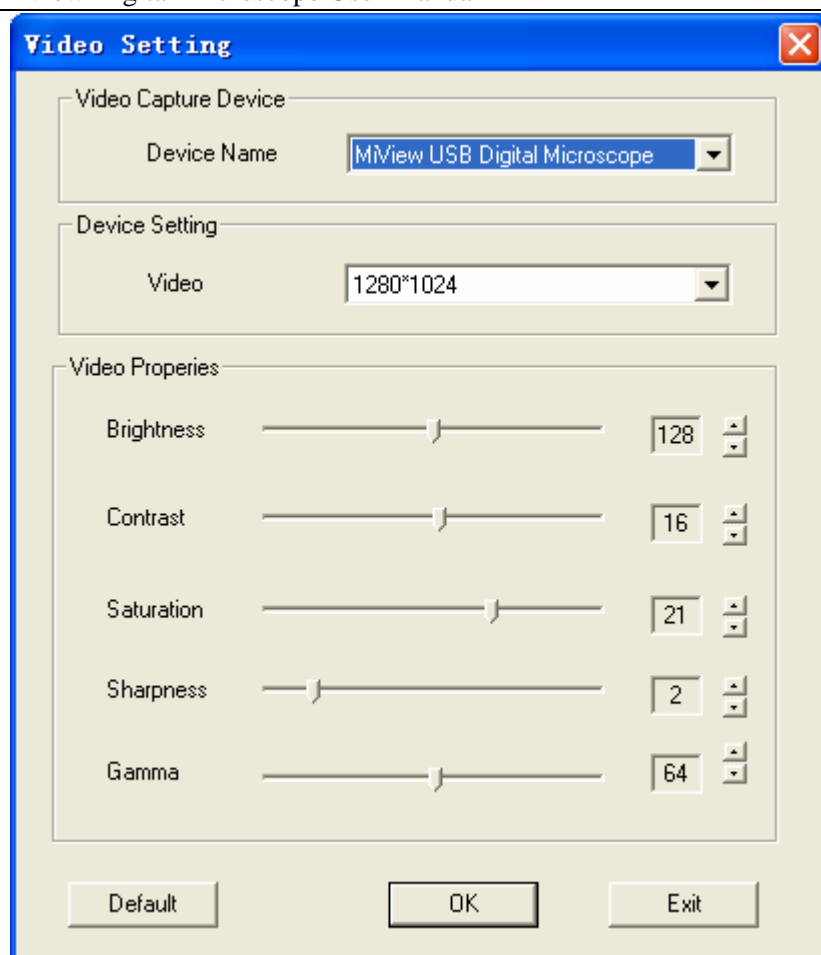
Select a photo or video in Photo or Video folder; click “File” on menu bar or right key of mouse to pup-up the drop-down menu for operating it.

Note: Open - open the selected Image file for measure or playing.

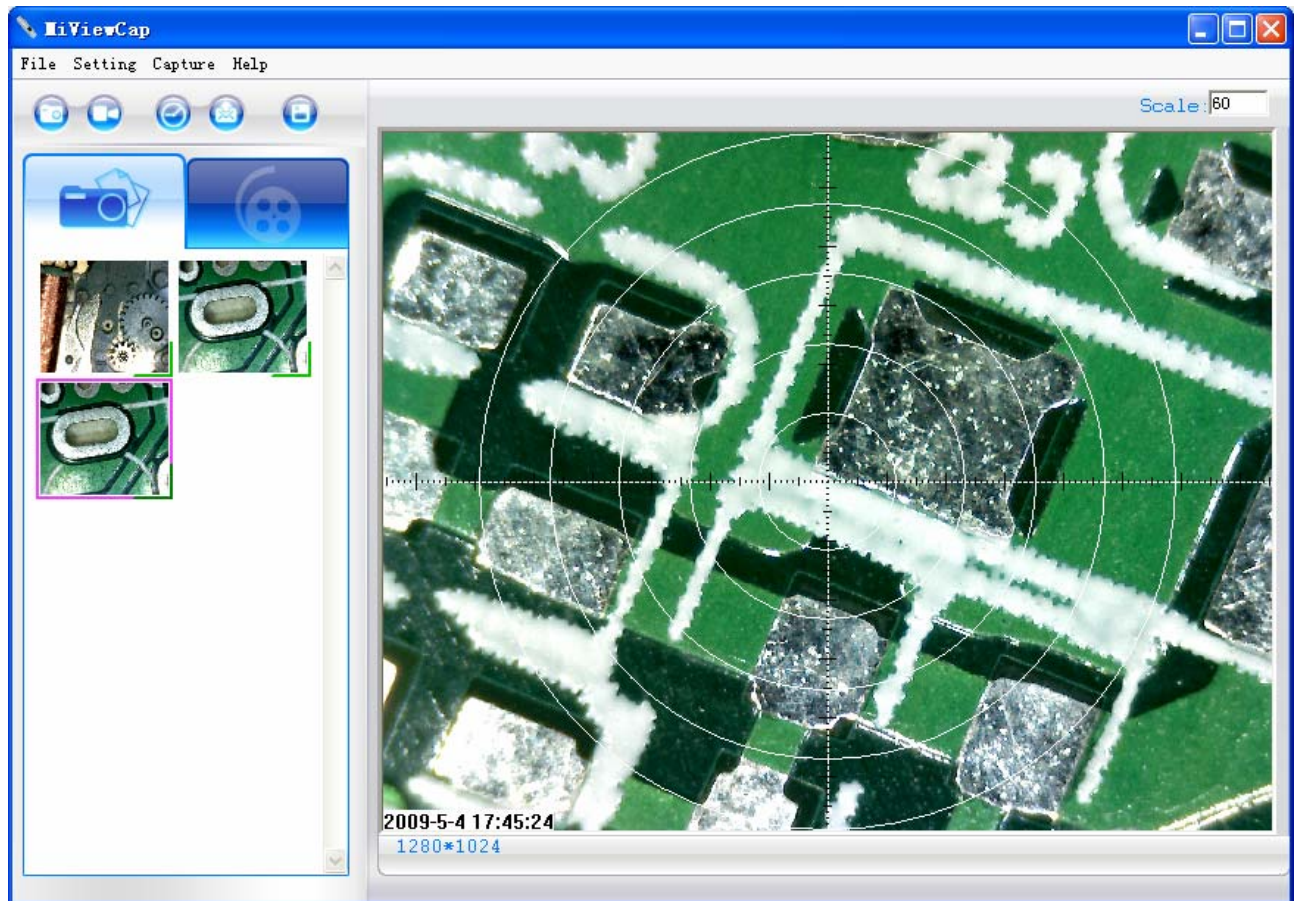
Setting

Click “Setting” on menu bar to pup-up the drop-down menu:




1. Select “Video setting” to pop-up the below window for video parameter setting:



2. Add in cross line/coordinates/circles/timer on preview area: click “Cross Line/Coordinates/Circles/Timer” on the drop-down menu or click the right key of mouse in preview area to pop a menu as below.



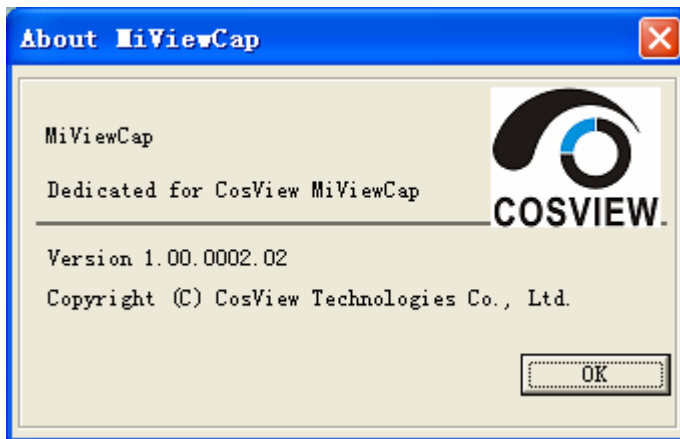
Capture

Click “Capture” on menu bar to pop-up the drop-down menu, these functions are same with 、、 functions.

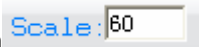
Help

Click “Help” on menu bar to pop-up the following message:


1. MiViewCap User manual: will instruct you how to use MiViewCap application software.
2. MiViewCap Update: you can click it to see if there is any software update.
3. About MiViewCap: you can check your present version as shown:



Rate

For measurement, it was suggested that put the magnification before capturing on right-up side on the program  , the magnification is the value on scale of Roller.

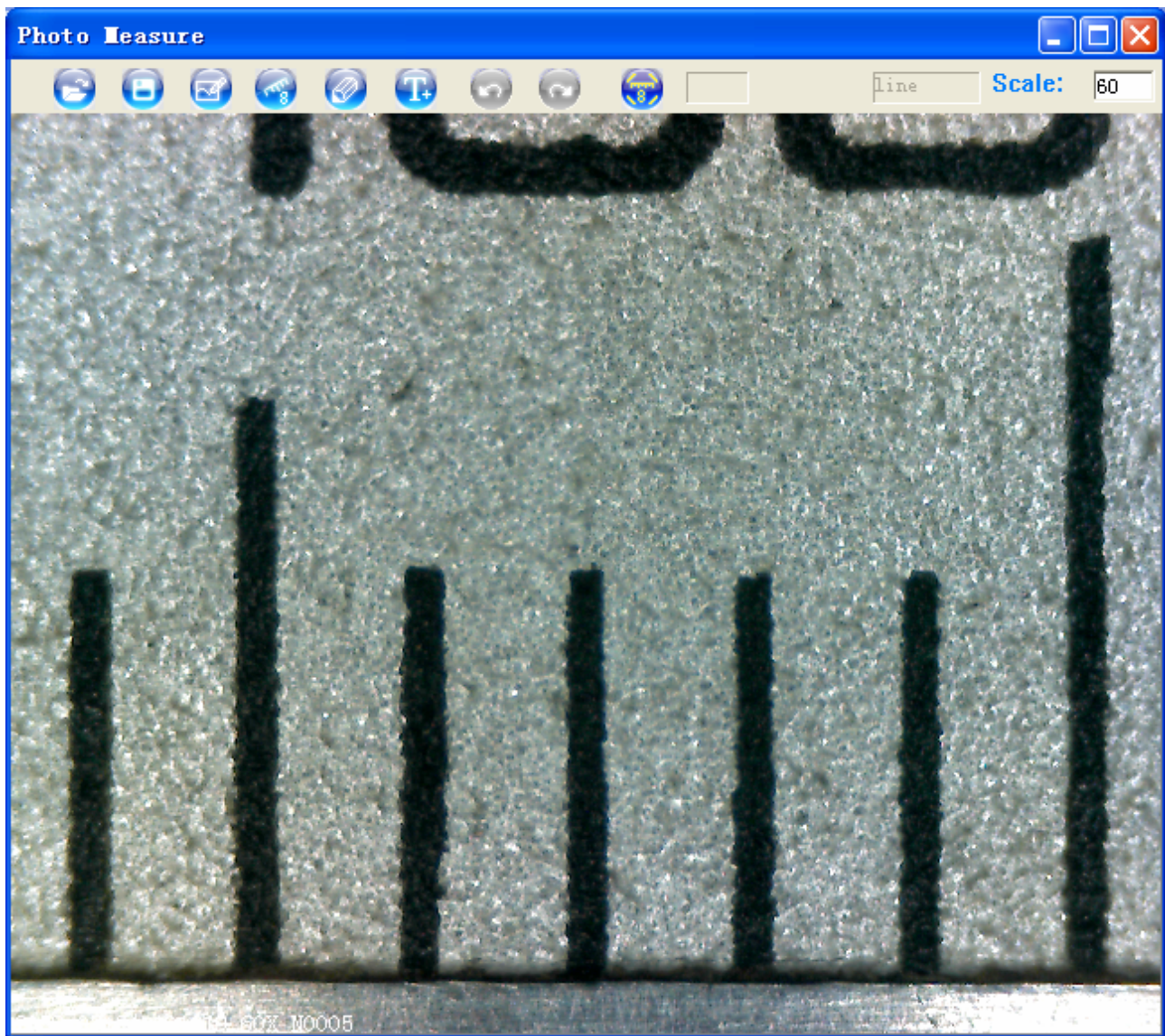
Full Screen Display and return

These displays of real time preview can be enlarged to full screen by clicking the  icon on right-top of program screen or double-clicking the left key of mouse in a site of the preview area.

To return from full screen display mode, please press “ESC” key of keyboard or double-clicking the left key of mouse.

Photo Viewing, Measure and Calibration

You can double-click the selected Photo in Photo folder to measure and view it as below shown:



For measure, please put the magnification if there is not number. The number is the scale value of roller at the baseline you captured this image.

Image file name: Still_yyyy-mm-dd_hhmmss_nnnx_Nxxxx is combined by date, time, magnification and serial number. For example, Still_2009-03-06_102949_060X_N0002 figures: Number is 0002, magnification is 60, date is Mar-06-2009, time is AM10:29:49.

The program will auto load the magnification when you measured it if you put the scale before you capture the image.



: Open an image for measure from other folder, but the image must be captured by MiviewCap.



: Save as.



: Paint: you can draw "Line, Continuous Line, Angle, Rectangle and Circle etc into the image.



: Measure for "Line, Continuous Line, Rectangle, Polygon, Radius Circle, Diameter Circle, Three Points Circle, Angle and Four Points Angle".



: Pen setting for “Paint” and “Measure”.



: Add text.



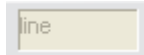
: Undo.



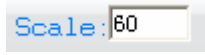
: Redo.



: Calibration



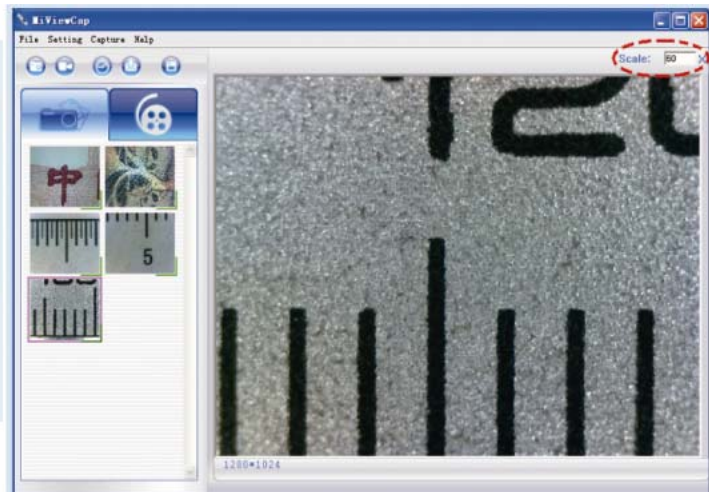
: ongoing Operation.



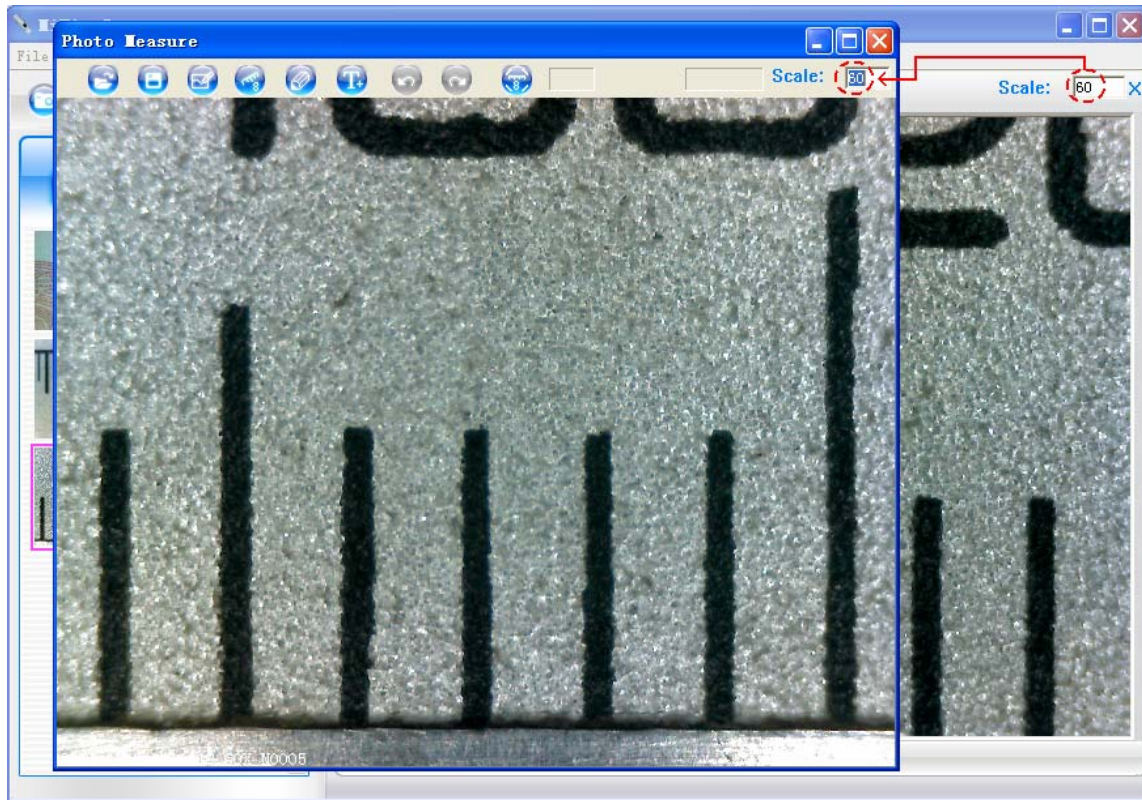
: Magnification


Calibration manual

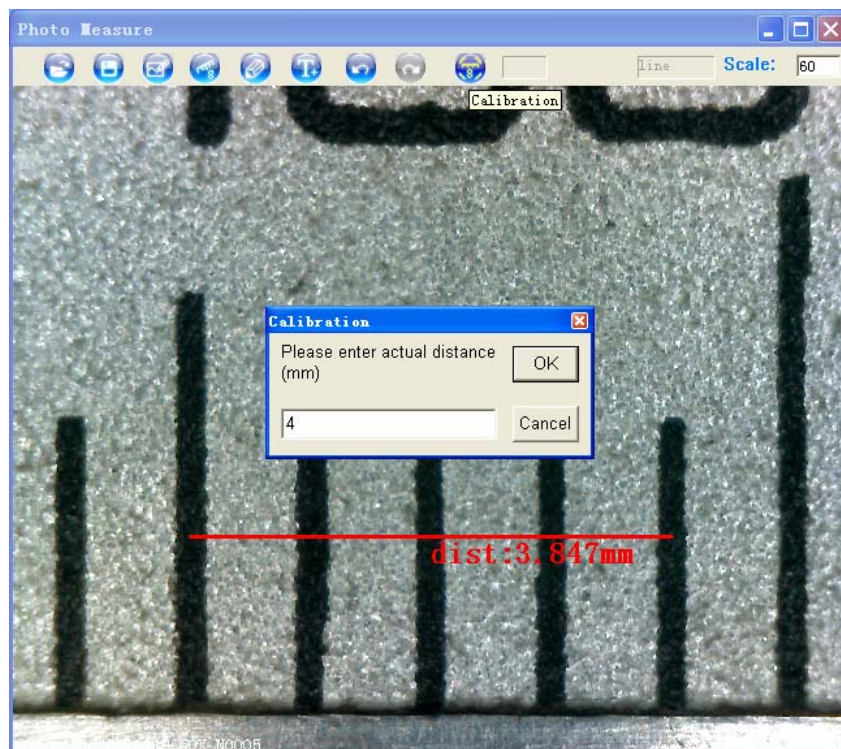
1. Select a known measurement standard as the to-be-observed object, such as a ruler, to be used for calibration. Bring image of the selected ruler into focus by turning the “Focus & Magnification adjustment wheel”, determine the magnification by taking a reading from the scale on the focus dial, enter the scale value in the “Scale” box in the upper right corner of the screen, and then take the image.



2. Now double click to open the image of the measurement calibration standard, and the scale of magnification will be automatically loaded for measuring.

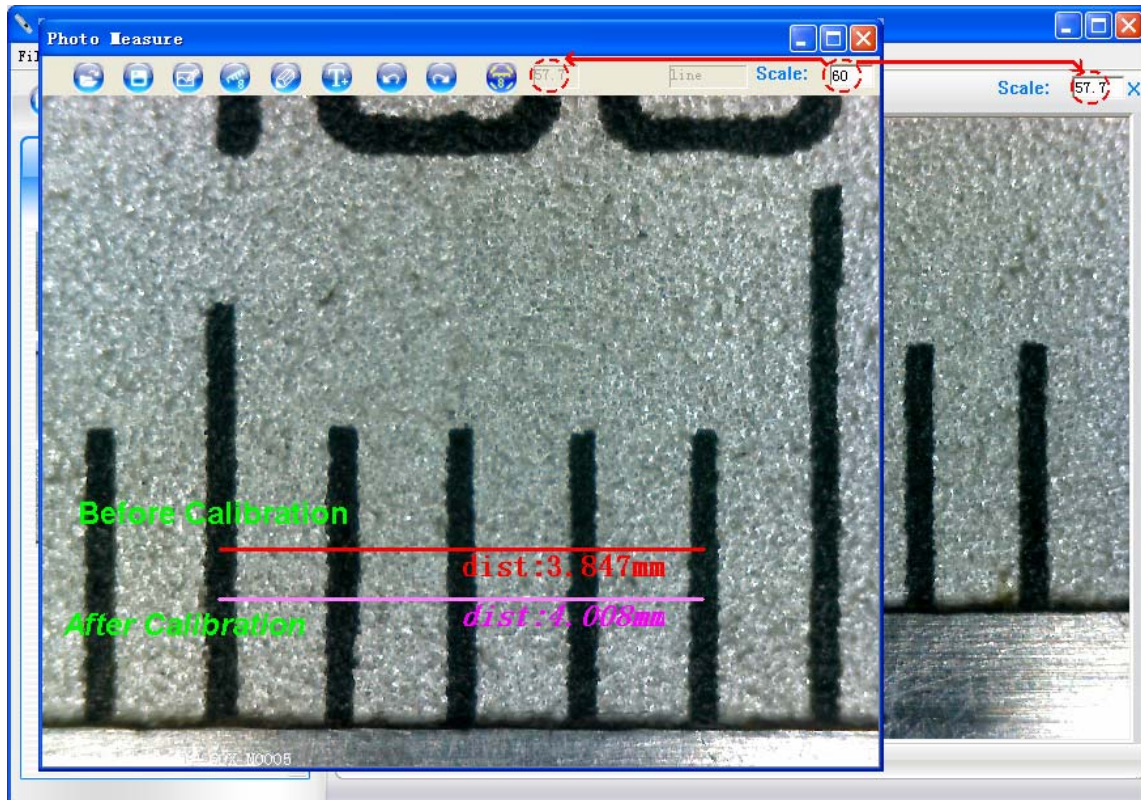


3. Now click the button of calibration  to take a sample measurement of the selected calibration standard by clicking beginning and ending points across the known measurement value (such as 4mm). A measurement value before calibration will be displayed (3.847mm in the example below), and then enter the exact known value of the measurement sample (4mm in this example) when the window of Calibration pop-up and then click “OK”.

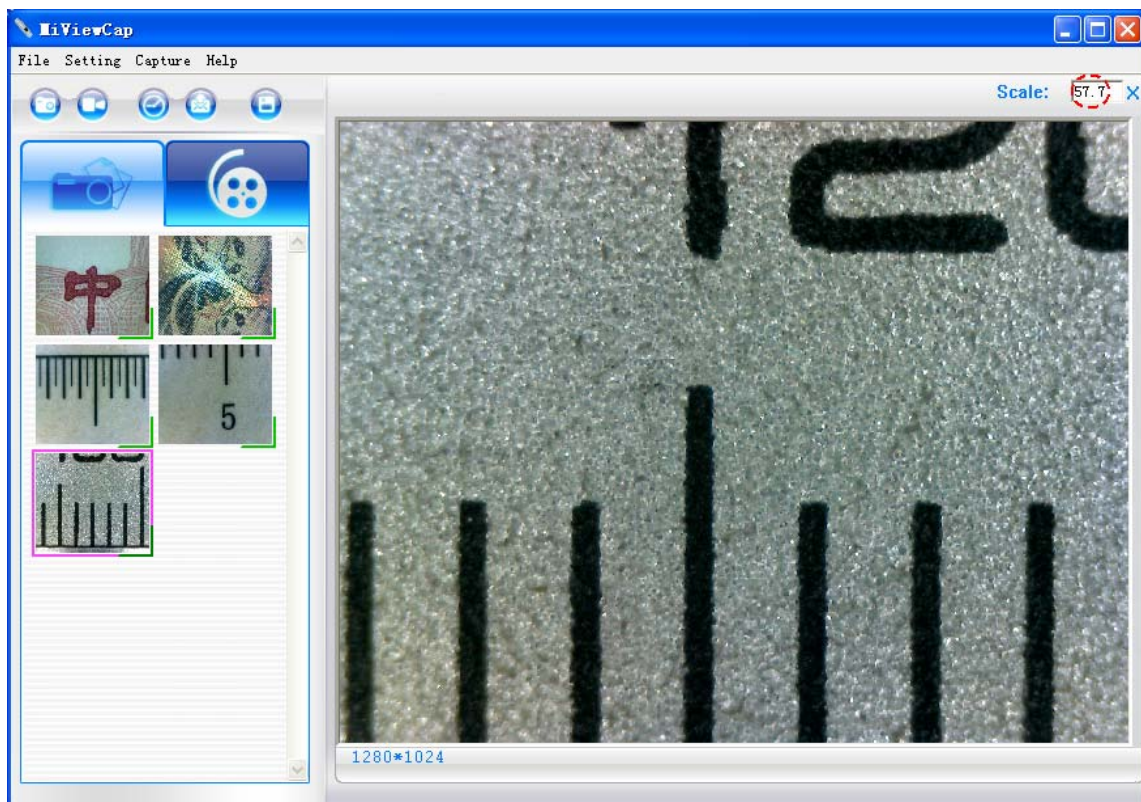


4. The software will automatically calibrate the scale of magnification and will show the calibrated scale of magnification at the right-hand box of calibration button, and also automatically adjust the scale of main

program on this focus point.



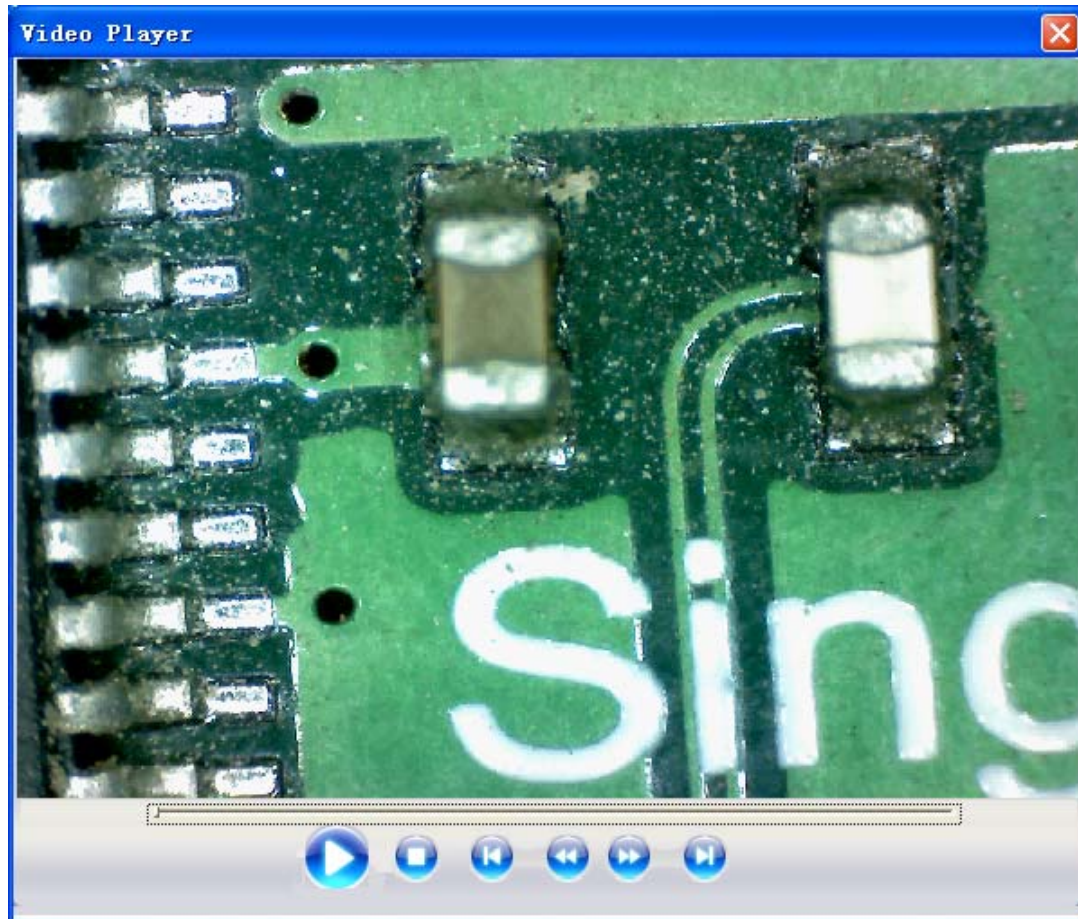
5. Now the software is ready to take new images with the calibrated magnification at this focus point (Don't adjust the "Focus & Magnification adjustment wheel"), thus the measurement for these captured images after magnification calibration will be very accurate and the error rate of measurement is under 3%.



Note: If you change the focus point (i.e. change the “Focus & Magnification adjustment wheel”), you must re-do the calibration.

Video player

You can double-click the selected video in video folder to play back it as below shown:



Troubleshooting

Common Fix

A. If MiView device and MiViewCaputure application were working OK and suddenly stops working properly, Please try the following:

1. Unplug or Power off MiView device from PC, close MiViewCaputure program.
2. After waiting for 1 minute, plug or power on MiView device, open MiViewCap program

B. For under **Recommended PC specification (see 4th page)**, maybe MiViewCap program does not work properly, please use MiViewCap-Beta.exe on CD: run it directly—double click.

C. For Vista first version OS system (Nor Vista SP1), maybe there is this issue: there are not any images (black screen) on preview area, please try: Toolbar->setting->default->Ok)

D. After PC resume from standby or hibernate, maybe MiViewCap will not work properly, please close it

and re-open to try.

E. If USB MiView microscope driver can't be installed completely, maybe your pc OS is not XP SP2 or above, please update it. If you installed the driver and application completely, but there is a tips: please connect Miview device after running the program, please uninstall MiviewCap and reboot PC, then re-install MiviewCap to try again.

Q&A

Q1. Why the object cannot be found on the display of the MiView microscope—black screen?

A: a. **If your PC USB port is USB 1.1 nor USB2.0, please use MiViewCap-Beta.exe on CD to try.**

b. Please put power switch on LED, then the illumination LEDs are light.

Q2. How to install MiViewCap application and driver?

A: a. Do not connect USB cable to MiView Microscope before driver installation completed.

b. Place installation CD into CD-ROM drive, and select "Install Software" to install.

Q3. How to uninstall driver and MiViewCap software?

A: In order to uninstall MiViewCap software, click on the uninstall utility from the Start button ->Control Panel -> Add or Remove Programs.

Q4. When connecting to PC, why the real-time display is slow or unsmooth?

A: a. Probably your PC's configuration is not sufficient enough. Please check the **Recommended PC specification** as mentioned in this User's Manual.

b. Probably your PC's CPU or memory is overloaded by executing too many applications software. Try to close applications or restart your PC to release the memory.

c. Probably your system has being attacked by virus, which may dramatically degrade your system's performance.

If the issue still exists, please contact: andy@cosview.com